

# Packaging Regulations

How to make sure you comply with the law

## Does your business use packaging?

If the answer is yes, you may have legal obligations under the UK Packaging Regulations. Read this leaflet to find out how to stay on the right side of the law.

Under the Packaging Regulations, many businesses in England and Wales must:

- register with the Environment Agency or a packaging compliance scheme
- recover or recycle a specified amount of packaging waste each year
- certify that this recovery and recycling has been carried out

Packaging is anything used to contain, protect, handle, deliver or present goods. Packaging is typically glass, paper, cardboard, aluminium, steel, plastic or wood but it can be any material.

Any business in England and Wales which uses packaging is likely to be affected by the Packaging Regulations. The flowchart on the next page will help you to determine whether your company needs to comply with the regulations.

If it does, you will need to register as a Packaging Producer. Even if you already recycle all the waste you can, you will still need to register in order to prove that you are complying with the regulations.

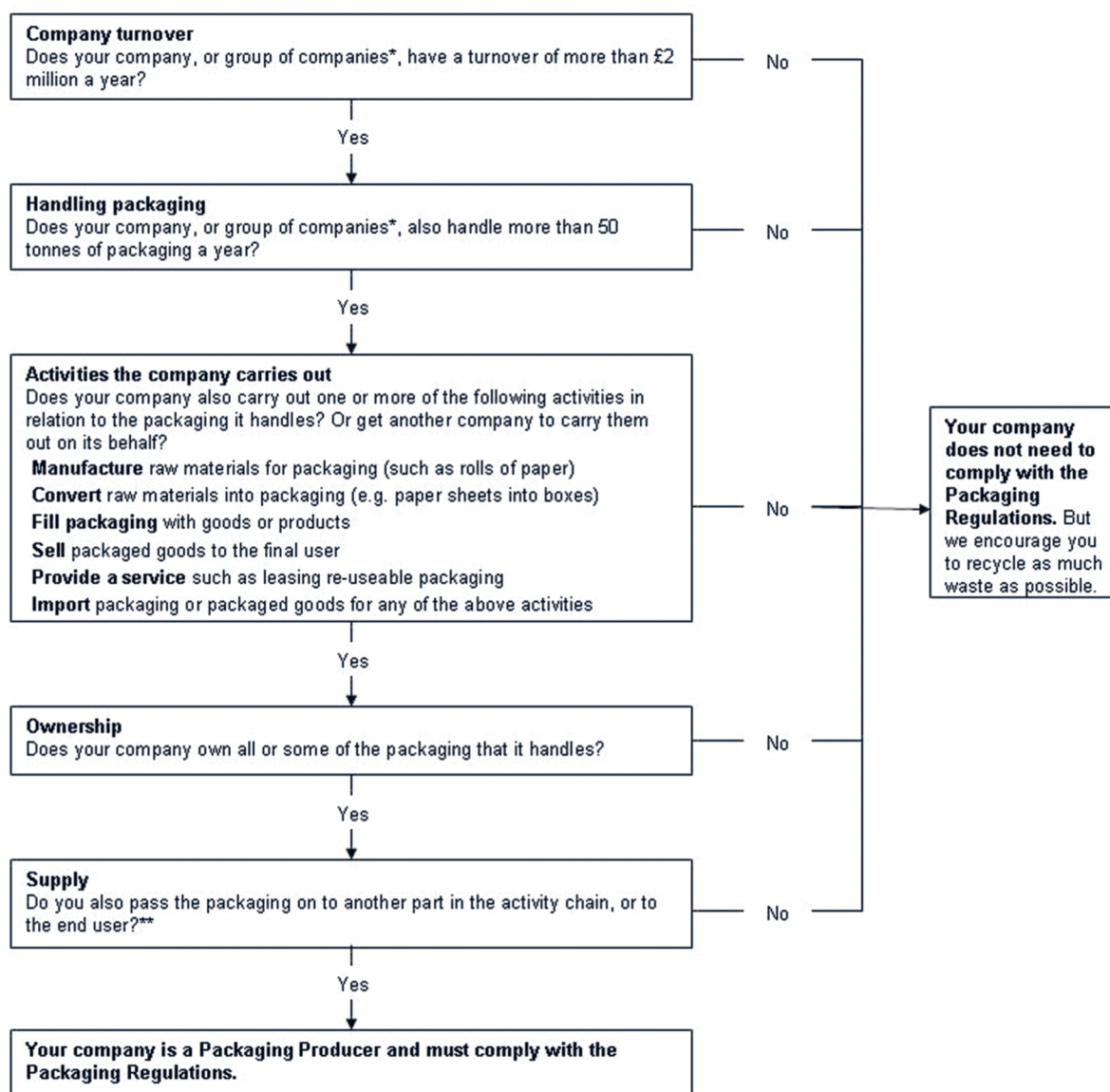
You can either register directly with us, or through an approved packaging compliance scheme, which will then take responsibility for proving that you have complied with your legal obligations. Failure to comply with these obligations is a criminal offence.



Before the Packaging Regulations were introduced in 1997, only 30% of packaging waste in the UK was recycled. By 2007 that proportion had doubled. And as the UK creates over ten million tonnes of packaging waste each year, it's a significant result.

### Do I need to register as a Packaging Producer?

This flowchart will help you to establish whether you have legal obligations under the Packaging Regulations.



\*If your company is a subsidiary or sister to another company, it is considered to be part of a group of companies.

\*\*If your company packages goods but does not pass the packaging on to anyone outside the company, then it will not be regarded as supplying packaging.

### **Registering as a Packaging Producer**

If your company is a Packaging Producer, you must register by 7th April each year. You can either register directly with us via the National Packaging Waste Database, or join an approved packaging compliance scheme. Go to [www.environment-agency.gov.uk/packaging](http://www.environment-agency.gov.uk/packaging)

When you register, you will be asked how much waste you handled in the previous calendar year, and based on this you will be told how much packaging waste you need to recover and recycle. You will need to provide evidence and certify by 31st January of the following year that you have met this obligation.

There is an annual registration fee for each year you are obligated. The fee is £776 if you register directly with us or £564 if you join a compliance scheme. Small businesses can opt to pay a reduced registration fee. If you are registering a group of companies, there is a slightly different fee structure, depending on how many subsidiaries you are registering.

If you register with a packaging compliance scheme, they will provide the evidence and ensure certification on your behalf. They will charge an additional fee for these services.

### **More help and information**

Our website has all the information you need: [www.environment-agency.gov.uk/packaging](http://www.environment-agency.gov.uk/packaging)

If you have any queries, please email us at: [packaging.waste@environment-agency.gov.uk](mailto:packaging.waste@environment-agency.gov.uk)

Or you can phone us on 08708 506 506 (Monday-Friday, 8am-6pm) and ask to speak to someone in the Waste Industry Regulatory Service (WIRS).

Weekday Daytime calls cost 8p plus up to 6p per minute from BT Weekend Unlimited. Mobile and other providers' charges may vary. If you are hard of hearing, please call our minicom service on 08702 422 549.

The Packaging Regulations also apply to businesses in Scotland and Northern Ireland, who should seek information from the Scottish Environment Protection Agency or the Northern Ireland Environment Agency.